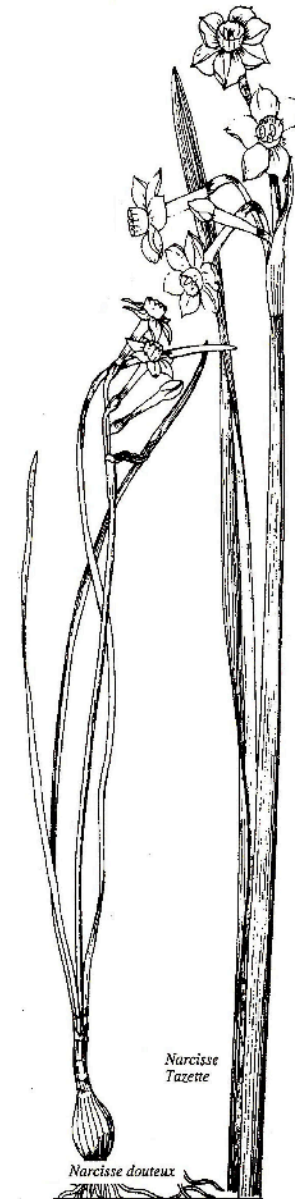
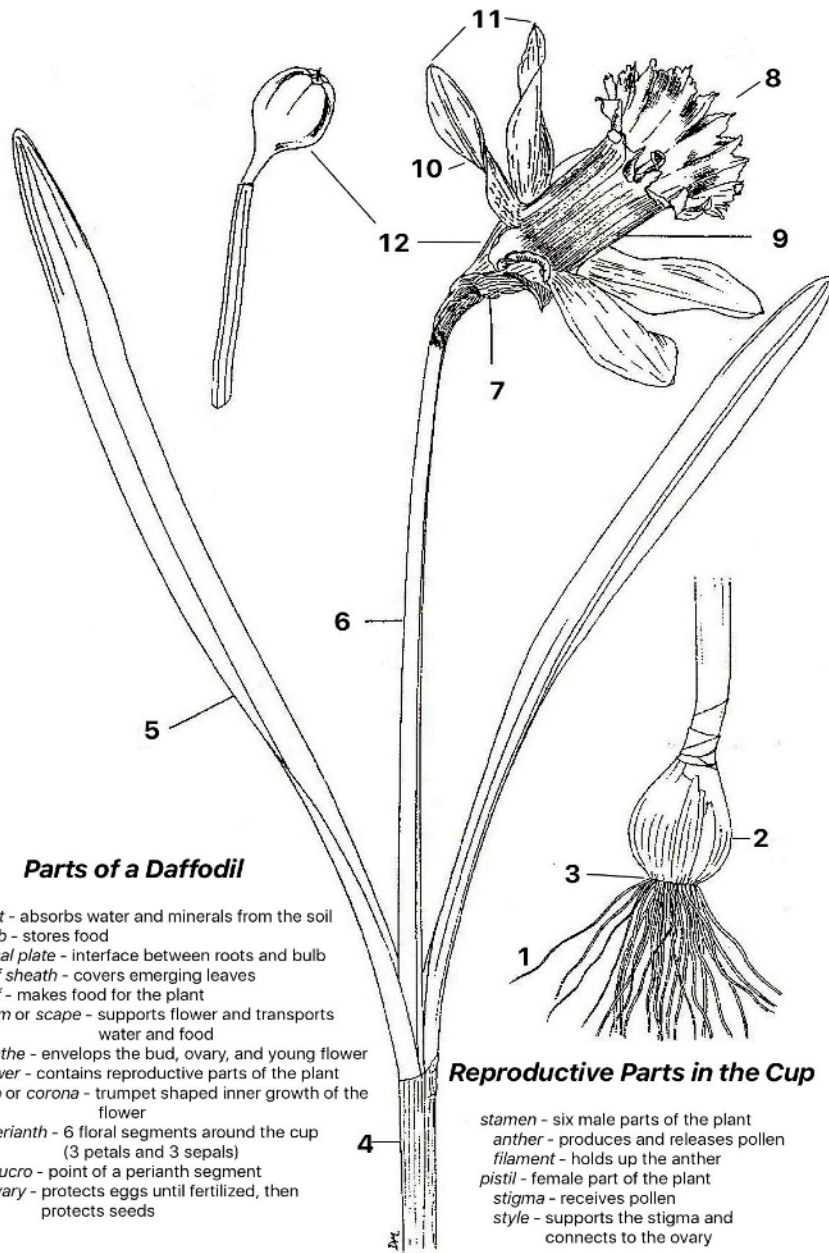


# A Breath of Spring

## 2017 Daffodil Show

**Chicago Botanic Garden**  
1000 Lake Cook Road  
Glencoe, IL

**Saturday, April 29, 2017**  
Noon to 5 p.m.  
and  
**Sunday, April 30, 2017**  
10 a.m.  
To 5 p.m.



**Sponsored by**  
The Midwest  
Daffodil Society  
Approved by the American Daffodil  
Society

*All growers are invited to exhibit.  
The Public is invited. Admission is Free.  
There is a charge for parking at the Chicago Botanic Garden.*

## NOTES

### **The Midwest Daffodil Society, Inc.**

We are a group of daffodil hobbyists who wish to share our interest, expertise, and energies on behalf of the most prolific and beautiful flower of the spring season. Membership is open to all with an interest in growing, studying, or showing daffodils, at only \$5 per year. For details, contact a member or see our website at [www.MidwestDaffodil.org](http://www.MidwestDaffodil.org).

We meet at the Chicago Botanic Garden and at other locations in the Chicago area. We sponsor a bulb sale in October and this show in late spring.

#### **The 2017 Midwest Daffodil Society Show**

The Show is divided into a Horticultural Division and a Design Division. The Horticultural Division has many judging categories based on type, color, and number of blooms displayed and on special collections or other recognized categories. Cut daffodils, container-grown daffodils, and species or wild daffodils may be shown. This year there is a special section only for members. Judging is based on a standard method of assigning points for condition, form, color, pose and other characteristics. The Horticultural Division is sanctioned by the American Daffodil Society. We have sections for Unnamed Daffodils to encourage broader participation. Anyone who grows daffodils is welcome to exhibit.

Our program schedule reflects changes made by the American Daffodil Society in their efforts to make competition in such shows more representative of the large variety in daffodils and to make the shows more interesting. As always, one of the main criteria is to allow more opportunities for growers to receive recognition for their special efforts. Judges are approved by the American Daffodil Society.

The Design Division consists of arrangements and stagings of daffodils according to special themes established each year. Judging is on the basis of artistic design, creativity, and use of materials according to established guidelines. Judges for the Design Division are from the Garden Clubs of Illinois.

<b>General Information and Index.....</b>	<b>1</b>
<b>Horticultural Division General Rules.....</b>	<b>2</b>
<b>Horticultural Divisions.....</b>	<b>4</b>
<b>Photography Division.....</b>	<b>10</b>
<b>Design Division Rules and Design Themes.....</b>	<b>11</b>
<b>American Daffodil Society Awards.....</b>	<b>12</b>
<b>Midwest Daffodil Society Awards.....</b>	<b>13</b>
<b>Midwest Daffodil Society Officers and Information.....</b>	<b>14</b>
<b>American Daffodil Society Information.....</b>	<b>15</b>
<b>Space for Notes.....</b>	<b>16</b>

## ACKNOWLEDGMENTS

The Midwest Daffodil Society thanks the Chicago Botanic Garden for providing the venue for this show and extends its gratitude to Stephanie Lindeman and Sara Harlow of the Garden staff for their advice and support.

## HORTICULTURAL DIVISION GENERAL RULES

1. Entries may be made from 4 PM to 10 PM Friday and 6 AM through 9 AM Saturday. All exhibitors must be off the floor by 10:30 AM. **This rule will be strictly enforced.**
2. Entry cards for exhibits will be available at the show. Only the top half of the entry card needs to be filled in.
3. Entries, awards, and ribbons may not be removed until 4 PM Sunday.

### RULES FOR HORTICULTURAL EXHIBITS

#### ENTRIES

4. All classes are open to anyone who grows daffodils except where specified otherwise.
5. An exhibitor may make as many entries as desired in any class provided each entry is a different cultivar or species or an entirely different collection of cultivars and/or species.
6. All blooms in the Horticultural Division must have been grown in the open by the exhibitor. Miniatures and daffodils grown and shown in their containers may be grown in protected areas.
7. Wedging material and containers for cut flower exhibits will be furnished by the show committee. Except for daffodils grown and shown in their containers, no daffodil foliage is permitted.
8. All collections of five or more stems must be exhibited with each cultivar or species in a separate container.

#### LABELING

9. Each cultivar or species must be correctly labeled with its name (or number) and division. The originator's name must appear on the label in American bred classes except seedlings shown by the originator. The originator is the person who first flowered the bulb regardless of who made the cross and/or planted the seed.
10. Exhibits that are not named or are incorrectly named will not be judged. Correct classification and labeling shall be the responsibility of the exhibitor.
11. No label may be changed, specimen added, removed, altered, or substituted after judging has begun or after an award has been placed.

#### INTERMEDIATES, MINIATURES, AND SEEDLINGS

12. An intermediate daffodil is a standard daffodil in divisions 1, 2, 3, 4, or 11 having a single floret whose diameter is typically greater than 50 mm through 80 mm. Intermediate daffodils may be entered in classes for standard daffodils as well as classes reserved for intermediate daffodils.
13. Miniature daffodils may be shown only in classes for miniatures. A miniature daffodil is any cultivar on the current ADS Approved List of Miniatures. Also, any named, numbered, or species daffodil which appears graceful, with all its parts proportionately small, may be exhibited in Miniatures classes and is eligible for all ADS awards, except that only numbered seedlings shown by the originator are eligible for the ADS Miniature Rose Ribbon. The judges may decline to judge any exhibit containing an unapproved miniature that they consider too large for these classes.
14. Blooms of seedlings may be exhibited in all classes for named cultivars. **ALL SEEDLINGS MUST BE IDENTIFIED BY A NUMBER DESIGNATION ASSIGNED BY THE ORIGINATOR.** If the exhibitor is not the originator, the name of the originator must be included as part of the identification.

#### AWARDS

15. Each stem in an exhibit of cut flowers receiving an ADS Award must score 90 or more on the appropriate ADS Scale of Points.
16. Only one first, one second, and one third award may be given in each class. Honorable mention awards may also be given if merited but only if first, second, and third have been awarded. First, second, third, and honorable mention awards may be withheld by the judges if in their opinion the exhibit is not worthy. If a blue ribbon (first place) has been awarded in a class eligible for an ADS ribbon, the ADS Award may not be withheld.
17. The decision of the judges is final. If an error is discovered in an exhibit after completion of judging, any award placed thereon (ADS, Special, or Ribbon) shall be forfeited by the exhibitor. If an error is discovered before the judging is completed, the class must be rejudged.

#### MISCELLANEOUS

18. The Show Committee reserves the right to subdivide classes by cultivar or color code when there are three or more worthy exhibits of the same cultivar or color code and if a sufficient number of worthy exhibits is left in the class. Species may be subdivided by their botanical sections.

## *Daffodil Internet Resources*

Midwest Daffodil Society  
*MidwestDaffodil.org*

**Facebook.com//MidwestDaffodilSociety**

American Daffodil Society  
*daffodilusa.org*

DaffLibrary – Online library with more than  
2,000 daffodil publications  
*dafflibrary.org*

DaffTube – Videos, slide show presentations,  
self-study programs  
*dafftube.org*

DaffSeek – Daffodil Database  
Informatin & photos for 23,000+ daffodils!  
*daffseek.org*

Daffnet – An international daffodil  
discussion forum  
*daffnet.org*

# MDS OFFICERS & SHOW COMMITTEE

## Midwest Daffodil Society Officers 2016-2017

**President** Rose Bradley  
**Vice-President** George Dorner  
**Secretary** Carol Champ  
**Treasurer** Al Champ  
**Directors** John Zimmie  
 Nancy Pilipuf  
 Lorraine Kirkpatrick



### Show Committee

Show Chairman	George Dorner
Horticulture Judges Chairman	Nancy Pilipuf
Artistic Design Chairman	William Hessel
Judges Honoraria	Karen Johanson
Awards Verification	Ray Rogers
Information Displays	Lorraine Kirkpatrick
Clerks Chairman	Gail Raith
Horticultural Exhibits Classification	Nancy Pilipuf
Show Schedule	George Dorner
Photography & Facebook	Beth Holbrooke
Awards Recorders	Gerri Gilbert
Hospitality	Katherine Robinson
Webmaster	George Dorner

### Midwest Daffodil Society Bulb Sale

Details about this year's Bulb Sale on October 14-15 and the Annual Meeting and Plant Exchange on October 22 will be posted at the club website [MidwestDaffodil.org](http://MidwestDaffodil.org).

Next year's events will be on the corresponding weekends of 2018, typically one day earlier.

Many materials about daffodils may be found at:

Follow [www.MidwestDaffodil.org](http://www.MidwestDaffodil.org) for local information, show results, growing advice, & membership signup.

19. The Royal Horticultural Society System of Classification will be used. The labeling authority is *Daffodils to Show and Grow* as amended each year in the December ADS *Daffodil Journal* supplemented by the current information in the American Daffodil Society's online database [DaffSeek.org](http://DaffSeek.org).

20. In the class descriptions, the words "pink cup," etc. define classes where that color is solid, 2W-P, or present in two adjacent zones, 2W-GPP. The words "pink in cup," etc. are used for classes that include both solid and rimmed cups of the same color. "Colored" is any color but white. A reverse bicolor has a predominantly yellow perianth and a predominantly white cup where "predominantly" means at least two adjacent zones must be coded the designated color.

ADS Point Scale for Judging Cut Specimens			
	Cultivar	Species	Historic
Condition	20	50	40
Form	25	15	15
Substance and Texture	15	10 (substance)	5
		5 (texture)	5
Color	15	10	15
Pose	15	5	5
Stem		5	5
Size	10	0	10
<b>TOTAL</b>	<b>100</b>	<b>100</b>	<b>100</b>

#### Some Recent Changes:

The winners of the Historic single stem, vase of 3, and collection of 5 are eligible for consideration for the Gold, White, and Purple Ribbons, in which case they are to be judged on the Cultivar scale.

The miniature daffodils registered prior to 1940, but removed from the ADS Miniature List over time by the Miniature Committee, shall be eligible for entry in the Historic Section class(es) for Miniatures--and ONLY in the Historic Section. They are eligible for all Historic Awards.

For miniature daffodils, both cut specimens and container grown, the judges will substitute Form and Grace for Form. In exhibits of 3 of a kind, the judges may deduct up to 5 points for lack of uniformity.

ADS Scale of Points for Judging Container-Grown Exhibits	
<b>Exhibit as a Whole</b>	<b>35</b>
Symmetry with uniform development of each plant	20
Floriferousness	10
Condition and correctness of container and label	5
<b>Bloom</b>	<b>55</b>
Condition	10
Form – typical of the cultivar	10
Substance and texture	10
Color	10
Pose	5
Stem	5
Size – typical of the cultivar	5
<b>Foliage</b>	<b>10</b>
Condition of foliage	5
Color of foliage	5
<b>TOTAL</b>	<b>100</b>

## HORTICULTURAL DIVISION FOR DAFFODILS

SECTION A – This is for a single stem of a standard cultivar or species daffodil.

SECTION B – This is for three stems of a standard cultivar or species daffodil.

SECTION F – This is for 5 stems of a standard cultivar or species daffodil from the same division.

### Division 1 – Trumpet Daffodil Cultivars

	A	B	F
Yellow perianth, yellow trumpet	A101	B101	
Colored perianth, orange or red trumpet	A102	B102	
Yellow perianth, pink in trumpet	A103	B103	
Reverse bicolor	A104	B104	F1
White perianth, pink in trumpet	A106	B106	
White perianth, white trumpet	A107	B107	
Any other color combination	A108	B108	

### Division 2 – Large-Cupped Daffodil Cultivars

Yellow perianth, yellow cup	A201	B201	
Colored perianth, orange or red cup	A202	B202	
Yellow perianth, orange or red rimmed cup	A203	B203	
Yellow perianth, pink in cup	A204	B204	
Reverse bicolor	A205	B205	
White perianth, predominantly yellow cup	A206	B206	F2
White perianth, yellow rimmed cup	A207	B207	
White perianth, predominantly orange or red cup	A208	B208	
White perianth, orange or red rimmed cup	A209	B209	
White perianth, predominantly pink cup	A210	B210	
White perianth, pink rimmed cup	A211	B211	
White perianth, white or GWW cup	A212	B212	
Any other color combination	A213	B213	

### Division 3 – Small-Cupped Daffodil Cultivars

Yellow perianth, yellow cup	A301	B301	
Yellow perianth, orange or red cup	A302	B302	
Orange perianth, orange or red cup	A303	B303	
Yellow perianth, orange or red rimmed cup	A304	B304	
Yellow perianth, pink in cup	A305	B305	
Reverse bicolor	A306	B306	F3
White perianth, yellow cup	A307	B307	
White perianth, yellow rimmed cup	A308	B308	
White perianth, orange or red cup	A309	B309	
White perianth, orange or red rimmed cup	A310	B310	
White perianth, pink in cup	A311	B311	
White perianth, white or GWW cup	A312	B312	
Any other color combination	A313	B313	

### Division 4 – Double Daffodil Cultivars

	A	B	F
<b>One Bloom to a Stem</b>			
Yellow perianth, yellow petaloids	A401	B401	
Colored perianth, orange or red petaloids	A402	B402	
Yellow perianth, pink in petaloids	A403	B403	
Reverse bicolor	A404	B404	
White perianth, yellow petaloids	A405	B405	
White perianth, orange or red petaloids	A406	B406	
White perianth, pink in petaloids	A407	B407	F4
White perianth, white petaloids	A408	B408	

**Youth Collection Ribbon:** Best collection of five different cultivars and/or species, all standards or all miniatures, in the Youth Section (Classes Y16 and Y19).

**Small Growers Ribbon:** Best cultivar or species exhibited in the Small Grower Section.

**Historic Bloom Ribbon:** Best pre-1940 cultivar in the Historic Section.

**Historic Best of Three Ribbon:** Best three stems of one pre-1940 cultivar, standard or miniature, in the Historic Section.

**Historic Daffodil Collection of Five Ribbon:** Best collection of five different pre-1940 standard cultivars in the Historic Section.

**Best Classic Ribbon:** Best standard cultivar from the Classic Section.

**Best Classic Single-Stem Ribbon:** Best cultivar from a class of single stems of standard cultivars in the Classic Section.

**Best Classic Three-Stem Ribbon:** Best three stems of one classic standard cultivar in the Classic Section.

**Best Classic Collection of Five Ribbon:** Best collection of five different classic standard cultivars from the Classic Section.

**Best Intermediate Ribbon:** Best intermediate-size cultivar from the Intermediate Section, any standard collection, or from any standard entry in the Youth or Small Growers Sections.

**Best Intermediate Three-Stem Ribbon:** Best set of three intermediate cultivars in the Intermediate Section or in standard collection classes of sets of three.

**Best Intermediate Collection of Five Ribbon:** Best collection of five different intermediate cultivars in the Intermediate Section.

**Standard Container-Grown Ribbon:** Best standard container-grown named or seedling daffodil exhibit in the Container-Grown Section.

**Miniature Container-Grown Ribbon:** Best miniature container-grown named or seedling daffodil exhibit in the Container-Grown Section.

**Species/Species Hybrid Container-Grown Ribbon:** Best species/species hybrid container-grown daffodil exhibit in Container-Grown Section.

**Silver Ribbon:** Awarded to the exhibitor winning the most first place (blue) ribbons in the Horticulture Division.

**Wells Knierim Ribbon:** Best photograph in the show.

## Midwest Daffodil Society Awards

Special Recognition Awards will be given for:

- Best Daffodil in Show
- Best Daffodil in Small Growers Section
- Best Miniature Daffodil in Show
- Best Vase of Three Stems
- Best Collection of Five Blooms
- Best Design in Show
- Best Use of Daffodils in Design
- Luck of the Irish 2017 Award

## AMERICAN DAFFODIL SOCIETY AWARDS

**Gold Ribbon:** Best standard cultivar or species in the Horticulture Division, excluding Container-Grown, and Challenge Sections.

**White Ribbon:** Best three stems of one cultivar or species of standard daffodils.

**Rose Ribbon:** Best standard seedling exhibited by its originator, excluding the Container-Grown and Challenge Sections.

**Purple Ribbon:** Best collection of five different standard cultivars or species in the Horticulture Division of the show.

**Maroon Ribbon:** Best collection of five different standard cultivars, one stem each, colored perianth, cup paler than perianth, any division or divisions (Class E26).

**Red-White-Blue Ribbon:** Best collection of five different standard cultivars, one stem each, of American breeding or origin, any division or divisions (Class E27).

**Marie Bozevich Ribbon:** Best collection of twelve different cultivars and/or species of standard daffodils from at least four RHS divisions (Class E28).

**Elise Havens Ribbon:** Best collection of twelve cultivars of standard daffodils from not less than three divisions of RHS divisions 5 through 10 (Class E29).

**Tom D. Throckmorton Ribbon:** Best collection of fifteen cultivars and/or species of standard daffodils from fifteen different RHS classifications (Class E30).

**Carey E. Quinn Award:** Silver Medal or Ribbon for a collection of twenty-four different cultivars and/or species of standard daffodils from at least five divisions. The medal may be won only once by any exhibitor in all local and regional shows. A former winner may exhibit in this class but may receive only the Quinn Ribbon. Open only to ADS members. (Class E31).

**Miniature Gold Ribbon:** Best miniature cultivar or species in the Horticulture Division, excluding Container-Grown, Historic, and Challenge Sections.

**Miniature White Ribbon:** Best three stems of the same miniature cultivar or species, excluding the Historic Section.

**Miniature Rose Ribbon:** Best miniature seedling exhibited by its originator, excluding the Container-Grown and Challenge Sections.

**Lavender Ribbon:** Best collection of five different miniature cultivars and/or species (Classes O01, O02, O03, O04 and Y19).

**Miniature Red-White-Blue Ribbon:** Best collection of five different miniature cultivars, one stem each, of American breeding or origin, any division or divisions (Class O04).

**Delia Bankhead Ribbon:** Best collection of nine miniature cultivars and/or species, one stem each from at least three different RHS divisions. (Class O05)

**Roberta C. Watrous Award:** Silver Medal or Ribbon for a collection of twelve different cultivars and/or species of miniature daffodils from at least three divisions. This medal may be won only once by any exhibitor in all local and regional shows. A former winner may exhibit in this class but may receive only the Watrous Ribbon. Open only to ADS members. (Class O06).

**Premier Miniature Collection Ribbon:** Best collection of twenty-four different miniature cultivars and/or species from at least five divisions. Open only to ADS members. (Class O07).

**Three Miniatures by Hybridizer Ribbon:** Best exhibit of three different cultivars of miniature daffodils, any divisions, hybridized and originated by the exhibitor. Open only to ADS members. (Class O21)

**Six Miniatures by Hybridizer Ribbon:** Best collection of six different cultivars of miniature daffodils, any divisions, hybridized and originated by the exhibitor. Open only to ADS members. (Class O22)

**Twelve Miniatures by Hybridizer Ribbon:** Best collection of twelve different cultivars of miniature daffodils, any divisions, hybridized and originated by the exhibitor. Open only to ADS members. (Class O23)

**Youth Ribbon:** Best cultivar or species exhibited in the Youth Section.

**Youth Best of Three Ribbon:** Best three stems of one cultivar or species, standard or miniature, in the Youth Section (Classes Y11 through Y15 and Y18)

### More than One Bloom to a Stem

Yellow perianth, yellow petaloids	A409	B409	
Yellow perianth, petaloids colored other than yellow	A410	B410	
White perianth, colored petaloids	A411	B411	
White perianth, white petaloids	A412	B412	

### Division 5 – Triandrus Daffodil Cultivars

	A	B	F
Yellow perianth, yellow cup	A501	B501	
Colored perianth, orange, red, or pink cup	A502	B502	
Reverse bicolor	A503	B503	
White perianth, yellow cup	A504	B504	F5
White perianth, orange or red cup	A505	B505	
White perianth, pink in cup	A506	B506	
White perianth, white cup	A507	B507	
Any other color combination	A508	B508	

### Division 6 – Cyclamineus Daffodil Cultivars

	A	B	F
Yellow perianth, yellow cup	A601	B601	
Colored perianth, orange or red cup	A602	B602	
Yellow perianth, pink in cup	A603	B603	
Reverse bicolor	A604	B604	
White perianth, yellow cup	A605	B605	F6
White perianth, orange or red in cup	A606	B606	
White perianth, pink in cup	A607	B607	
White perianth, white cup	A608	B608	
Any other color combination	A609	B609	

### Division 7 – Jonquilla or Apodanthus Daffodil Cultivars

	A	B	F
Yellow perianth, yellow cup	A701	B701	
Yellow perianth, orange or red cup	A702	B702	
Orange perianth, orange or red cup	A703	B703	
Colored perianth, pink in cup	A704	B704	
Reverse bicolor	A705	B705	F7
White perianth, yellow, orange, or red cup	A706	B706	
White perianth, pink in cup	A707	B707	
White perianth, white cup	A708	B708	

### Division 8 – Tazetta Daffodil Cultivars

	A	B	F
Yellow perianth, yellow cup	A801	B801	
Yellow perianth, orange or red in cup	A802	B802	
Reverse bicolor or colored perianth with pink in cup	A803	B803	
White perianth, yellow cup	A804	B804	
White perianth, orange or red in cup	A805	B805	F8
White perianth, pink in cup	A806	B806	
White perianth, white cup	A807	B807	
Any other color combination	A808	B808	

### Division 9 – Poeticus Daffodil Cultivars

	A	B	F
White perianth, eye green	A901	B901	
White perianth, eye any other color	A902	B902	F9

### Division 10 – Bulbocodium Cultivars – Any cultivar

	A	B	F
	A1001	B1001	F10

### Division 11 – Split-Corona Daffodil Cultivars One Bloom Per Stem

	A	B	F
11a Colored perianth, yellow, orange, or red cup	A1101	B1101	
11a Reverse bicolor or colored perianth, pink in cup	A1102	B1102	
11a White perianth, yellow, orange, or red cup	A1103	B1103	
11a White perianth, pink in cup	A1104	B1104	



11a White perianth, white cup	A1105	B1105	F11
11a Any other color combination	A1106	B1106	
11b Any cultivar	A1107	B1107	
<b>More Than One Bloom Per Stem</b>			
Colored perianth	A1108	B1108	
White perianth	A1109	B1109	

<b>Division 12 – Other Daffodil Cultivars</b>	<b>A</b>	<b>B</b>	<b>F</b>
One bloom per stem, colored perianth	A1201	B1201	
One bloom per stem, white perianth	A1202	B1202	F12
More than one bloom per stem, any cultivar	A1203	B1202	

<b>Division 13 – Daffodils Distinguished Solely by Botanical Name</b>	<b>A</b>	<b>B</b>	<b>F</b>
Any species or species hybrid, one bloom to a stem	A1301	B1301	
Any species or species hybrid, more than one bloom to a stem	A1302	B1302	F13

### SECTION C – CLASSIC DAFFODILS

This section is open to all standard cultivars introduced from 1940 to 1969 inclusive. All cultivars shall be labeled with name, division number, and year of registration (or introduction). The date shown in the *International Daffodil Register and Classified List 2008* and its supplements will be the authority. The Classification Committee may subdivide each class by decade and/or division, regardless of the number or quality of exhibits in each subdivision prior to judging. Daffodils in this section will be judged using the cultivar scale.

	<b>C</b>
One stem, any division, with yellow perianth	C1
One stem, any division, with white perianth	C2
Three stems of one cultivar, any division, with yellow perianth	C3
Three stems of one cultivar, any division, with white perianth	C4
Collection of 5 different classic cultivars (Place with standard collections.)	E21

### SECTION E — STANDARD DAFFODIL COLLECTIONS

These classes call for one stem of each cultivar/species unless specified otherwise. Additional categories may be established if judges warrant. See also SECTION F listed above in rightmost column.

	<b>E</b>
Five different intermediate cultivars.	E20
Five different classic cultivars	E21
Five different pink cupped and/or pink in cup cultivars.	E22
Five different white cultivars.	E23
Five different red and/or orange cupped cultivars.	E24
Five different yellow cultivars.	E25
ADS Maroon Ribbon – Five different reverse bicolor cultivars.	E26
ADS Red-White-Blue Ribbon – Five different American-bred cultivars. For correct labeling procedures, see Rule No. 9.	E27
Marie Bozievich Ribbon – Twelve different cultivars and/or species from not less than 4 divisions.	E28
Elise Havens Ribbon – Twelve different cultivars from at least three divisions from RHS divisions 5 through 10.	E29
Tom D. Throckmorton Ribbon – Fifteen cultivars and/or species from fifteen different RHS classifications. COLOR CODES REQUIRED.	E30
Carey E. Quinn Award – Twenty-four cultivars and/or species from at least five RHS divisions. First time winners may receive the Silver Quinn Medal. Former winners receive the Quinn Ribbon. This class is open only to ADS members.	E31

## ARTISTIC DESIGN DIVISION

- All classes are open to any individual. Only one entry in each class may be made, however each individual may enter as many classes as desired. Artistic designs must be made by the exhibitor. Plant material in this section need not be grown by the exhibitor.
- All entries shall include at least one daffodil, which need not be identified. Other plant material may be permitted as indicated in classes. Accessories are permitted in all classes. No artificial plant material shall be allowed. Fresh material shall not be treated. Treatment of dried materials is allowed.
- Properties furnished by the exhibitor should be marked with the owner's name (not in view). Neither the Midwest Daffodil Society, The American Daffodil Society, Garden Clubs of Illinois, nor the Chicago Botanic Garden will be responsible for loss or damage. However, every care will be taken.
- No background will be provided by the exhibitor. Accessories and underlay are permitted. Daffodils for arrangements will be made available by the Midwest Daffodil Society. Tables will be furnished. All other materials will be supplied by the exhibitor.
- Plant material on the "protect and save" list of Garden Clubs of Illinois may not be used in competition.
- A brief 3" X 5" card of intent may accompany the entry. DO NOT put name or address on the front of the card.
- Entries shall be placed from 6 a.m. to 11 a.m. on Saturday, April 25, 2015. They must be checked by a show official before the exhibitor leaves the building. The exhibit shall be removed between 4:30 and 5 p.m. on Sunday, April 26, 2015 by the exhibitor. The societies named above shall not be responsible for any exhibits left unless prior arrangements are made.
- Judging will be according to National Council of State Garden Clubs by accredited Garden Clubs of Illinois judges. The decision of the judges will be final. Authority: Handbook For Flower Shows, 2007. Judging will begin at 11 a.m. on Saturday.
- All designs, ribbons, and awards remain until 4:30 p.m. on Sunday, April 26, 2015.

### Spring Wonderland

- |         |   |
|---------|---|
| Class 1 | <b>Over the ground lies a mantle of white.</b><br>A design using white flowers and/or container.                                  |
| Class 2 | <b>A heaven of diamonds came up during the night.</b><br>A design incorporating something that sparkles (could be water showing). |
| Class 3 | <b>To hearts are thrillin' in spite of the chill in the weather.</b><br>A design using two containers.                            |
| Class 4 | <b>Love knows no season; love knows no clime.</b><br>Name a season that your design suggests.                                     |
| Class 5 | <b>Romance can blossom any old time.</b><br>A small design not to exceed 8 inches in height, width, or depth.                     |

Special Recognition Awards will be given for:  
**Best Design in Show**  
**Best Use of Daffodils in Design**

## PHOTOGRAPHY DIVISION

The American Daffodil Society Photography Division celebrates the daffodil. Photographers are encouraged to compose their entries according to accepted principles of two-dimensional design.

- Potential exhibitors should contact the Show Chair the intention to exhibit and the number of photographs, if known. There is no entry fee, and exhibitors need not be members of the ADS. An e-mail indication of intent to display, or a printed indication sent by mail, will suffice. Include a return address or e-mail address.
  - All entries must be the work of the exhibitor and must contain images of one or more daffodils as required by the class. Entries must not have won a First Place award in any class in a previous ADS National show.
  - Classes are open to color or monochrome photographs and will be subdivided if needed. An exhibitor may make up to two entries in each class, up to 8 photographs in total.
  - Photographs should be mounted on lightweight neutral, stiff card stock or foam board. Matting (over the print and backing) should not be used. Minimum print size is 5x7 inches (13x18 cm), and maximum mounted size is 14x17 inches (36x43 cm). No glass or frame should be used. The photographer's name and address should be shown on the back of the mounting board.
  - An entry card must be attached to each exhibit on the right side 2" (5 cm) below the top. On the face of the card, record the class and the title of the photo (if any). For an entry in class P3, indicate on the entry card the location where the photograph was taken. The face of the entry card (below the fold) should have the name of the photographer.
  - If warranted by the quality or quantity of entries, classes may be further subdivided. First, Second, Third, and Honorable Mention awards will be given as merited in each subdivision. The ADS Wells Knierim Ribbon for Best Photograph in Show will be awarded. Each Photography Judge may award an ADS Special Award Judges Choice ribbon to a photograph that deserves special recognition.
- 7.
- Portraits of Daffodils – a close-up of a single daffodil bloom or up to three blooms of the same cultivar.
- Daffodils in the Landscape or Garden.
- Daffodils in their Native or Natural Habitat.
- Daffodils and People.
- Daffodils and Animals.
- An arranged still life incorporating daffodils.
- Abstract or special effects incorporating daffodils or daffodil elements.

The Wells Knierem Award will only be awarded if, in the opinion of the Show Committee, the number of entries is sufficient.

## SECTION H – HISTORIC DAFFODILS

This section is open to all cultivars, i.e., not species, introduced or in gardens before 1940. All cultivars shall be labeled with name, division number, and year of registration (or introduction). The earliest date shown in the *International Daffodil Register and Classified List 2008* and its supplements will be the authority.

	<b>H</b>
One stem, standard daffodil, before 1850	H01
One stem, standard daffodil, 1850-1879	H02
One stem, standard daffodil, 1880-1899	H03
One stem, standard daffodil, 1900-1909	H04
One stem, standard daffodil, 1910-1919	H05
One stem, standard daffodil, 1920-1929	H06
One stem, standard daffodil, 1930-1939	H07
One stem, miniature daffodil	H08
Three stems of one standard daffodil cultivar	H09
Three stems of one miniature daffodil cultivar	H10
Five different standard cultivars, one stem of each	H11

## SECTIONS I & J — INTERMEDIATE DAFFODILS

SECTION I – This is for a single stem of a standard cultivar.

SECTION J – This is for three stems of a standard cultivar.

	<b>I</b>	<b>J</b>
Division 1, Colored perianth	I101	J101
Division 1, White perianth	I102	J102
Division 2, Colored perianth	I201	J201
Division 2, White perianth	I202	J202
Division 3, Colored perianth	I301	J301
Division 3, White perianth	I302	J302
Division 4, Any cultivar	I401	J401
Division 11, Colored perianth	I1101	J1101
Division 11, White perianth	I1102	J1102
Five different intermediate cultivars (Place with standard collections.)		E20

## SECTION K – CONTAINER-GROWN DAFFODILS

Blooms are to be grown in and exhibited in a container or pot. All bulbs in any one container shall be of the same cultivar or species. Container-grown daffodils may be grown in protected areas. No bloom or exhibit in this section shall be eligible for any ADS award other than the ADS awards for container-grown daffodils. Rule No. 18 is extended to permit subdividing classes by daffodil division.

	<b>K</b>
Standard daffodils – named cultivars or seedlings (no species)	K1
Miniature daffodils – named cultivars or seedlings (no species)	K2
Species and species hybrid daffodils. All sizes of species and species hybrids are eligible for this class.	K3

## SECTIONS M & N – MINIATURE DAFFODILS

SECTION M – Single stem of a miniature cultivar or species daffodil.

SECTION N – Three stems of a miniature cultivar or species daffodil.

	<b>M</b>	<b>N</b>
<b>Division 1 – Trumpet Daffodil Cultivars</b>	M101	N101
<b>Division 2 – Large-Cupped Daffodil Cultivars</b>	M201	N202
<b>Division 3 – Small-Cupped Daffodil Cultivars</b>	M301	N301
<b>Division 4 – Double Daffodil Cultivars</b>	M401	N401
<b>Division 5 – Triandrus Daffodil Cultivars</b>	M501	N501



<b>Division 6 – Cyclamineus Daffodil Cultivars</b>	M601	N601
<b>Division 7 – Jonquilla or Apodanthus Daffodil Cultivars</b>		
<b>Single floret</b>	M701	N701
<b>Two or more florets</b>	M702	N702
<b>Division 8 – Tazetta Daffodil Cultivars</b>	M801	N801
<b>Division 9 – Poeticus Daffodil Cultivars</b>	M901	N901
<b>Division 10 – Bulbocodium Daffodil Cultivars</b>	M1001	N1001
<b>Division 11 – Split-Corona Daffodil Cultivars</b>	M1101	N1101
<b>Division 12 – Other Daffodil Cultivars</b>	M1201	N1201
<b>Division 13 – Daffodils Distinguished Solely by Botanical Name</b>	M1301	N1301

---

**SECTION O – OTHER MINIATURES EXHIBITS**

---

	<b>O</b>
Five cultivars or seedlings, one stem each (no species). This class is eligible for the ADS Lavender Ribbon.	O01
Five cultivars, seedlings, or species, one stem each. This class is eligible for the ADS Lavender Ribbon.	O02
Five stems, each one from a different division. This class is eligible for the ADS Lavender Ribbon.	O03
ADS Miniature Red-White-Blue Ribbon – Five cultivars or seedlings of American breeding, one stem each. For correct labeling procedure, see Rule No. 9. This class is eligible for the ADS Lavender Ribbon.	O04
ADS Delia Bankhead Ribbon – Nine cultivars and/or species, one stem each from at least three different RHS divisions.	O05
Roberta C. Watrous Award – Twelve cultivars and/or species of miniature daffodils from at least three RHS divisions. First time winners may receive the Silver Watrous Medal. Former winners receive the Watrous Ribbon. This class is open only to ADS members.	O06
ADS Premier Miniature Collection Ribbon – Twenty-four cultivars and/or species, one stem each, from at least five RHS divisions. This class is open only to ADS members.	O07

---

**SECTION S – SMALL GROWERS CLASSES**

---

This section is open to exhibitors growing 50 or fewer cultivars and/or species who have not previously won the Small Growers Ribbon. All entries are single stems, except S15.

	<b>S</b>
Division 1 – Trumpet Daffodil Cultivars	S1
Division 2 – Large-Cupped Daffodil Cultivars	S2
Division 3 – Small-Cupped Daffodil Cultivars	S3
Division 4 – Double Daffodil Cultivars	S4
Division 5 – Triandrus Daffodil Cultivars	S5
Division 6 – Cyclamineus Daffodil Cultivars	S6
Division 7 – Jonquilla or Apodanthus Daffodil Cultivars	S7
Division 8 – Tazetta Daffodil Cultivars	S8
Division 9 – Poeticus Daffodil Cultivars	S9
Division 10 – Bulbocodium Daffodil Cultivars	S10
Division 11 – Split-Corona Daffodil Cultivars	S11
Division 12 – Other Daffodil Cultivars	S12
Division 13 – Daffodils Distinguished Solely by Botanical Name	S13
Miniature Daffodil, any division	S14
Three stems of one standard daffodil	S15

Any grower may enter the following section with daffodils whose names are not known. Ribbons may be awarded by the judges and the following classes may be subdivided, but entries in this section are not eligible for ADS awards nor other show awards.

**SECTION U – UNKNOWN DAFFODILS**

	<b>U</b>
A single bloom of a daffodil from any standard division	U01
A single bloom of an unknown miniature daffodil	U02
A vase of three blooms of the same standard daffodil	U03
A vase of three blooms of the same miniature daffodil	U04

---

**SECTION Y – YOUTH DIVISION**

---

Exhibitors are 20 years of age or younger. Youth exhibitors are not restricted to this section; they may elect to enter other sections for which they qualify. Rule No. 18 is extended to permit subdividing Classes by division.

	<b>Y</b>
One standard stem	Y01
Three stems of one standard daffodil	Y02
Collection of five different standard daffodils.	Y03
One miniature stem, any division.	Y04
Three stems of one miniature daffodil, any division.	Y05
Collection of five different miniature daffodils.	Y06

---

**SECTION Z – MDS LUCK OF THE IRISH MIST**

---

After last year's fall sale, the Midwest Daffodil Society had left over a very large selection of bulbs of Irish Mist 2 W-Y. These were distributed among the members at the fall meeting. All members who successfully grew a bulb of Irish Mist are invited to enter their best blooms in this class. A special award will be presented to the winner of this class.